

**Human Resources Division**  
**FAQ Notebook**  
**K-12 Classroom Teachers and Certificated Administrators**  
**2020-2021**

Click on the page number in **BLUE** to view the report

**PAGE**

**A. FINGERTIP FACTS**

|                                 |                   |
|---------------------------------|-------------------|
| -2020-2021 Fingertip Facts..... | <a href="#">A</a> |
|---------------------------------|-------------------|

**B. K-12 TEACHER DEMOGRAPHICS**

*All K-12 Classroom Teachers*

|   |                      |
|---|----------------------|
| - Employee Subgroup and Job, and Gender and Job.....                  | <a href="#">B-1</a>  |
| - Employee Subgroup and School Type, and Gender and School Type.....  | <a href="#">B-2</a>  |
| - Ethnic Origin and Job.....  | <a href="#">B-3</a>  |
| - Local District and Job.....   | <a href="#">B-4</a>  |
| - Local District and Ethnic Origin.....                               | <a href="#">B-5</a>  |
| - Local District Total Minority.....                                  | <a href="#">B-6</a>  |
| - Local District and Employee Subgroup.....                           | <a href="#">B-7</a>  |
| - Years of Experience by Pay Scale Level.....                         | <a href="#">B-8</a>  |
| - Local District and Average and Median Age.....                      | <a href="#">B-9</a>  |
| - Age and Job.....  | <a href="#">B-10</a> |
| - Age and Job (Graph).....  | <a href="#">B-11</a> |
| - Professional Development: Pay Scale Group and Job.....              | <a href="#">B-12</a> |
| - Distribution of Teachers on the Preparation (T) Salary Table.....   | <a href="#">B-13</a> |
| - Distribution of Teachers on the Preparation (L) Salary Table.....   | <a href="#">B-14</a> |
| - Distribution of Teachers on the Preparation (T/L) Salary Table..... | <a href="#">B-15</a> |

**C. SCHOOL-BASED ADMINISTRATORS**

|  |                      |
|--|----------------------|
| - Employee Subgroup and Job.....                 | <a href="#">C-20</a> |
| - Ethnic Origin and Job, and Gender and Job..... | <a href="#">C-21</a> |
| - Local District and Job.....                    | <a href="#">C-22</a> |
| - Age and Job.....                               | <a href="#">C-23</a> |

**D. NON-SCHOOL-BASED ADMINISTRATORS**

|  |                      |
|--|----------------------|
| - Employee Subgroup and Job.....                 | <a href="#">D-24</a> |
| - Ethnic Origin and Job, and Gender and Job..... | <a href="#">D-25</a> |
| - Age and Job.....                               | <a href="#">D-26</a> |
| - Age and Gender.....                            | <a href="#">D-27</a> |



# FINGERTIP FACTS

2019-2020

## Estimated Student Enrollment

| Projected Norm Day Enrollment, including Independent Charters Schools & Affiliated Charters |                |
|---|----------------|
| K-3 Enrollment  | 180,115        |
| 4-6 Enrollment  | 127,804        |
| 7-8 Enrollment  | 84,835         |
| 9-12 Enrollment   | 164,806        |
| <b>Total</b>  | <b>557,560</b> |
| Special Day Classes in Regular Schools  | 23,582         |
| Special Day Classes in Special Education Schools  | 2,008          |
| Continuation and Opportunity Schools  | 4,209          |
| <b>Other Enrollment</b>   | <b>29,799</b>  |
| <b>Total Graded and Other Enrollment</b>  | <b>587,359</b> |
| Early Education   | 18,988         |
| Adult Education   | 64,527         |
| <b>Total</b>  | <b>673,849</b> |

Estimated Student Enrollment  
2019-20 Superintendent's Final Budget – District Enrollment Trends  
(Source: <https://bit.ly/2KD1HPa>)

## Student Characteristics

English and 99 languages are spoken in Los Angeles Unified schools. Los Angeles Unified has 123,579 students who are learning to speak English proficiently. The primary languages are Spanish (92.3% of English learners) and Armenian (1.42%). Korean, Tagalog, Cantonese, Arabic, Vietnamese and Russian languages account for less than 1% of the total.

|  |             |
|--|-------------|
| Latino   | 73.4        |
| White  | 10.5        |
| African American   | 8.2         |
| Asian  | 4.2         |
| American Indian or Alaskan Native, Native Hawaiian or Pacific Islander | Less than 1 |
| Filipino   | 2.1         |
| Not reported   | 1           |

(Source: Norm Day 2018-19) Note: Percentages do not add up to 100%.

The **Parent and Community Services** engages families by creating partnerships with parents ([achieve.lausd.net/pcss](https://achieve.lausd.net/pcss)).

## Health and Wellness Centers

Los Angeles Unified maintains 15 health and wellness centers (<https://achieve.lausd.net/wellnesscenters>).

## Extended Learning Programs

Los Angeles Unified offers extended learning opportunities before and after the school day. These programs provide a safe place for students to continue learning. The program includes: Academic Tutorial Programs, Enrichment Programs, and Recreational Programs (<https://btb.lausd.net/>).

## School Facilities

Los Angeles Unified has built 137 new schools and 101 school additions since 1997. Providing our students, faculty, and staff with a safe learning environment is our highest priority. (<https://www.laschools.org/new-site/ab300/>).

## Los Angeles Unified Boundaries

Covering an area totaling 710 square miles which includes most of the city of Los Angeles, along with all or portions of 26 cities and unincorporated areas of Los Angeles County. Approximately 4.8 million people live within these boundaries.

### Cities Entirely Within Los Angeles Unified

|                 |                |
|-----------------|----------------|
| Cudahy          | Maywood        |
| Gardena         | Vernon         |
| Huntington Park | San Fernando   |
| Lomita          | West Hollywood |

### Cities Partially Within Los Angeles Unified

|               |                    |
|---------------|--------------------|
| Bell          | Long Beach         |
| Bell Gardens  | Los Angeles        |
| Beverly Hills | Lynwood            |
| Calabasas*    | Montebello         |
| Carson        | Monterey Park      |
| Commerce      | Rancho Palos Verde |
| Culver City   | Santa Clarita*     |
| Hawthorne     | South Gate         |
| Inglewood     | Torrance           |

\*Only a few parcels of land generating no enrollment are within Los Angeles Unified.

## Los Angeles Unified Employees

Los Angeles Unified is the second-largest employer in Los Angeles County.

|                                      | 2019-20       | 2018-19       |
|--------------------------------------|---------------|---------------|
| K-12 Teachers                        | 24,026        | 24,265        |
| Adult Education Teachers             | 825           | 598           |
| Early Education Teachers             | 567           | 567           |
| <b>Total (1)</b>                     | <b>25,418</b> | <b>25,430</b> |
| K-12 Administrators                  | 2,451         | 2,438         |
| Adult Education Administrators       | 52            | 52            |
| Early Education Administrators       | 42            | 43            |
| <b>Total (2)</b>                     | <b>2,545</b>  | <b>2,533</b>  |
| Other Certificated Support Personnel | 5,146         | 4,869         |
| Regular Classified Personnel         | 29,900        | 27,233        |
| Teacher Assistants                   | 3,514         | 3,511         |
| <b>Total Employees (3)</b>           | <b>66,523</b> | <b>63,576</b> |

(As of July 1, 2019 and excludes independent charters)

- (1) Includes classroom teachers and non-classroom teaching positions, such as instructional coaches.
- (2) Includes school-based administrators and non-school-based local district and central office administrators.
- (3) Includes active non-teaching and non-administrative certificated-personnel, including nurses and counselors, based on budgeted, full-time equivalent employees. Source: Office of Human Resources.



Los Angeles Unified

# FINGERTIP FACTS

2019-2020

## Schools and Centers

Elementary schools range from less than 200 to more than 1,100 pupils. Middle schools enroll up to 1,800 students. High schools may have more than 2,500 students.

|   |              |
|---|--------------|
| Primary School Centers                    | 19           |
| Elementary Schools                        | 441          |
| Middle Schools                            | 79           |
| Senior High Schools                       | 92           |
| Option Schools                            | 54           |
| Magnet Schools                            | 53           |
| Multi-level Schools                       | 25           |
| Special Education Schools                 | 13           |
| Home/Hospital Schools                     | 2            |
| K-12 Magnet Centers (on regular campuses) | 239          |
| Independent Charter Schools               | 228          |
| Other Schools and Centers                 | 142          |
| <b>Grand Total</b>                        | <b>1,386</b> |

## Did You Know?



Los Angeles Unified is the nation's **2nd** largest school district.



We served 129 million meals in 2018-19. 720,000 meals were served daily. Nearly 80% qualified for free or reduced-price lunch. More than 19,500 students experienced homelessness, and more than 8,500 lived in foster care, however, those numbers fluctuated depending on family situations during the school year.



Nearly 300 magnet programs are available for K-12 students. Themes include Business, Center for Enriched Studies, Communication Arts, Liberal Arts, Science, Technology, Engineering and Math, Visual and Performing Arts. (Only Gifted and Highly Gifted students must be identified.)



Dual-language programs are offered in: Arabic, Armenian, French, Korean, Mandarin and Spanish. Additional language instruction is also offered in: American Sign Language, Italian, Japanese, Latin and Russian.

## Instructional Calendar (K-12)

- First Day of Instruction, August 20, 2019
- Winter Recess, December 23-January 10, 2020
- Spring Recess, April 6-10, 2020
- Last Day of Instruction, June 12, 2020

## School Holidays

- Admission Day, August 30, 2019
- Labor Day, September 2, 2019
- Thanksgiving, Nov. 28 -29, 2019
- Veterans Day, Nov. 11, 2019
- Dr. Martin Luther King Jr. Day, Jan. 20, 2020
- Presidents Day, Feb. 17, 2020
- Caesar E. Chavez Day Observed, April 3, 2020
- Memorial Day, May 25, 2020

## Financial Information

More than 85% of the Los Angeles Unified General Fund comes from the state, and serves as the primary operating fund for the K-12 program. These dollars pay for expenses such as:

|   | 2019-2020             | 2018-2019             |
|---|-----------------------|-----------------------|
| <b>Certificated salaries</b> (teachers, librarians, counselors, nurses, and administrators)   | \$3 billion           | \$2.8 billion         |
| <b>Classified salaries</b> (e.g., instructional aides, office employees, custodians, plumbers, bus drivers and their supervisors)   | \$986.1 million       | \$1.0 billion         |
| <b>Employee benefits</b> (retirement plans, employee health insurance and Worker's Compensation Insurance)  | \$2.2 billion         | \$2.06 billion        |
| <b>Books and Supplies</b> (textbooks, instructional materials, general supplies and fuel)   | \$698.5 million       | \$713 million         |
| <b>Other operating expenses</b> (contracts, utilities, rents and leases, travel expense and instructional consultants)  | \$862 million         | \$850 million         |
| <b>Capital Outlay (1)</b> (cost of facilities [land and buildings], books and media for libraries and equipment)  | \$101.4 million       | \$8.8 million         |
| <b>Other outgoing expenses</b> (pass through of apportionments to county-educated students, transfers of taxes to direct-funded charters, bond redemptions and bond interest) | \$37.3 million        | \$36.7 million        |
| <b>Total Expenses General Fund</b>  | <b>\$7.87 billion</b> | <b>\$7.49 billion</b> |

(1) Increase due to CA Clean Energy Jobs Act

**LOS ANGELES UNIFIED SCHOOL DISTRICT**  
**Human Resources**

**TEACHER DEMOGRAPHICS 2020-2021**

**All K-12 Classroom Teachers by Employee Subgroup and Job ID**

| Employee Subgroup           | Job           |              |                   |                     | Totals        | %             |
|-----------------------------|---------------|--------------|-------------------|---------------------|---------------|---------------|
|                             | Elementary    | Secondary    | Special Education | Resource Specialist |               |               |
| Permanent                   | 10,109        | 6,357        | 2,613             | 1036                | 20,115        | 86.4%         |
| Probationary                | 826           | 1014         | 342               | 80                  | 2,262         | 9.7%          |
| Qualifying                  | 7             | 6            | 27                | 14                  | 54            | 0.2%          |
| Limited                     | 3             | 12           | 0                 | 1                   | 16            | 0.1%          |
| District Intern (T Table)   | 0             | 0            | 25                | 16                  | 41            | 0.2%          |
| District Intern (L Table)   | 58            | 79           | 262               | 66                  | 465           | 2.0%          |
| University Intern (T Table) | 0             | 0            | 5                 | 0                   | 5             | 0.0%          |
| University Intern (L Table) | 25            | 96           | 70                | 31                  | 222           | 1.0%          |
| Temporary                   | 2             | 11           | 0                 | 0                   | 13            | 0.1%          |
| Provisional (T Table)       | 1             | 0            | 5                 | 1                   | 7             | 0.0%          |
| Provisional (L Table)       | 1             | 9            | 70                | 13                  | 93            | 0.4%          |
| <b>Totals</b>               | <b>11,032</b> | <b>7,584</b> | <b>3,419</b>      | <b>1,258</b>        | <b>23,293</b> | <b>100.0%</b> |

|                                      |       |        |
|--------------------------------------|-------|--------|
| Regular Credential (All T Table)     | 96.7% | 22,513 |
| District/University Intern (L Table) | 2.9%  | 687    |
| Provisional (L Table)                | 0.4%  | 93     |

|                        |       |        |
|------------------------|-------|--------|
| Permanent Teachers     | 95.7% | 22,280 |
| Non-Permanent Teachers | 4.3%  | 1,013  |

**All K-12 Classroom Teachers by Gender and Job ID**

| Gender        | Job           |              |                   |                     | Totals        | %             |
|---------------|---------------|--------------|-------------------|---------------------|---------------|---------------|
|               | Elementary    | Secondary    | Special Education | Resource Specialist |               |               |
| Female        | 9,175         | 4,095        | 2,677             | 938                 | 16,885        | 72.5%         |
| Male          | 1,856         | 3,487        | 742               | 320                 | 6,405         | 27.5%         |
| Nonbinary     | 1             | 2            | 0                 | 0                   | 3             | 0.0%          |
| <b>Totals</b> | <b>11,032</b> | <b>7,584</b> | <b>3,419</b>      | <b>1,258</b>        | <b>23,293</b> | <b>100.0%</b> |

Source: SAP Norm Day (September 18, 2020)

Prepared by Personnel Research and Analysis

IC:DA/TEACHER DEMOGRAPHICS/2020-21/ALL 2020-21.xsl: ESG

**LOS ANGELES UNIFIED SCHOOL DISTRICT**  
**Human Resources**

**TEACHER DEMOGRAPHICS 2020-2021**  
**K-12 Teachers by Employee Subgroup, School Type, and Gender**

| Employee Subgroup     | School Type        |                |                     |                           |                       |                 |              |                       |                                  |                     |              | Totals        | %             |
|-----------------------|--------------------|----------------|---------------------|---------------------------|-----------------------|-----------------|--------------|-----------------------|----------------------------------|---------------------|--------------|---------------|---------------|
|                       | Elementary Schools | Middle Schools | Senior High Schools | Special Education Schools | EEC & State Preschool | Primary Centers | Span Schools | Community Day Schools | Continuation Senior High Schools | Opportunity Schools | Other*       |               |               |
| Permanent             | 10,177             | 3,122          | 4,052               | 170                       | 55                    | 158             | 1,090        | 58                    | 180                              | 104                 | 949          | 20,115        | 86.4%         |
| Probationary          | 862                | 491            | 635                 | 10                        | 18                    | 6               | 182          | 4                     | 10                               | 0                   | 44           | 2,262         | 9.7%          |
| Qualifying            | 25                 | 8              | 10                  | 1                         | 2                     | 0               | 4            | 0                     | 2                                | 1                   | 1            | 54            | 0.2%          |
| Limited               | 2                  | 0              | 10                  | 0                         | 0                     | 0               | 3            | 0                     | 0                                | 0                   | 1            | 16            | 0.1%          |
| District Intern (T)   | 19                 | 7              | 12                  | 0                         | 0                     | 0               | 2            | 0                     | 1                                | 0                   | 0            | 41            | 0.2%          |
| District Intern (L)   | 229                | 102            | 88                  | 6                         | 5                     | 4               | 25           | 0                     | 2                                | 0                   | 4            | 465           | 2.0%          |
| University Intern (T) | 2                  | 0              | 1                   | 0                         | 1                     | 0               | 0            | 0                     | 0                                | 0                   | 1            | 5             | 0.0%          |
| University Intern (L) | 52                 | 58             | 92                  | 2                         | 2                     | 0               | 11           | 0                     | 0                                | 0                   | 5            | 222           | 1.0%          |
| Temporary             | 1                  | 10             | 1                   | 0                         | 0                     | 0               | 1            | 0                     | 0                                | 0                   | 0            | 13            | 0.1%          |
| Provisional (T)       | 3                  | 0              | 2                   | 0                         | 0                     | 1               | 0            | 0                     | 0                                | 0                   | 1            | 7             | 0.0%          |
| Provisional (L)       | 34                 | 18             | 24                  | 8                         | 1                     | 0               | 6            | 0                     | 1                                | 0                   | 1            | 93            | 0.4%          |
| <b>Totals</b>         | <b>11,406</b>      | <b>3,816</b>   | <b>4,927</b>        | <b>197</b>                | <b>84</b>             | <b>169</b>      | <b>1,324</b> | <b>62</b>             | <b>196</b>                       | <b>105</b>          | <b>1,007</b> | <b>23,293</b> | <b>100.0%</b> |

| Gender        | School Type        |                |                     |                           |                       |                 |              |                       |                                  |                     |              | Totals        | %             |
|---------------|--------------------|----------------|---------------------|---------------------------|-----------------------|-----------------|--------------|-----------------------|----------------------------------|---------------------|--------------|---------------|---------------|
|               | Elementary Schools | Middle Schools | Senior High Schools | Special Education Schools | EEC & State Preschool | Primary Centers | Span Schools | Community Day Schools | Continuation Senior High Schools | Opportunity Schools | Other*       |               |               |
| Female        | 9,668              | 2,379          | 2,688               | 132                       | 75                    | 155             | 871          | 29                    | 100                              | 69                  | 719          | 16,885        | 72.5%         |
| Male          | 1,737              | 1,436          | 2,238               | 65                        | 9                     | 14              | 453          | 33                    | 96                               | 36                  | 288          | 6,405         | 27.5%         |
| Nonbinary     | 1                  | 1              | 1                   | 0                         | 0                     | 0               | 0            | 0                     | 0                                | 0                   | 0            | 3             | 0.0%          |
| <b>Totals</b> | <b>11,406</b>      | <b>3,816</b>   | <b>4,927</b>        | <b>197</b>                | <b>84</b>             | <b>169</b>      | <b>1,324</b> | <b>62</b>             | <b>196</b>                       | <b>105</b>          | <b>1,007</b> | <b>23,293</b> | <b>100.0%</b> |

\*Adapted Physical Ed Unit-Itinerant; Carlson Hospital; Chavez LA Campus; Deaf & Hard of Hearing Unit-Itinerant; HR Cert Contract Pool (C,E,NE, NW, Sm W); HR-Cert Tmp Asmt Nyr; HR-Districtwide List; Inclusion Facilitator Unit-Itinerant; Inclusion Program School Administration; PE-Teacher-Itinerant; Psychological Services-School Administ; Sp Ed Service Center-Central-Itinerant; Sp Ed-Infant/Pre School Prog; SpEd Administration Services-School Adm; SpEd Services Central, Oper-School Admin; SpEd-Multiple School Administration; Speech & Language Unit-Itinerant; Visual Services Unit-Itinerant

Source: SAP Norm Day (September 18, 2020)

Prepared by Personnel Research and Analysis

IC:DA/TEACHER DEMOGRAPHICS/2020-21/ALL 2020-21.xsl: LEVEL

**LOS ANGELES UNIFIED SCHOOL DISTRICT**  
**Human Resources**

**TEACHER DEMOGRAPHICS 2020-2021**

**All K-12 Classroom Teachers by Ethnicity and Job**

| Ethnic Origin                     | Job           |              |                   |                     | Totals        | %             |
|-----------------------------------|---------------|--------------|-------------------|---------------------|---------------|---------------|
|                                   | Elementary    | Secondary    | Special Education | Resource Specialist |               |               |
| American Indian or Alaskan Native | 48            | 51           | 10                | 4                   | 113           | 0.5%          |
| Asian                             | 1,100         | 759          | 199               | 89                  | 2,147         | 9.2%          |
| Black or African American         | 822           | 656          | 397               | 188                 | 2,063         | 8.9%          |
| Filipino                          | 242           | 291          | 141               | 40                  | 714           | 3.1%          |
| Hispanic/Latino                   | 5,543         | 2,896        | 1,573             | 449                 | 10,461        | 44.9%         |
| Pacific Islander                  | 20            | 20           | 8                 | 1                   | 49            | 0.2%          |
| White                             | 3,139         | 2,744        | 1,026             | 449                 | 7,358         | 31.6%         |
| Two or More                       | 96            | 132          | 52                | 27                  | 307           | 1.3%          |
| Undeclared                        | 22            | 35           | 13                | 11                  | 81            | 0.3%          |
| <b>Totals</b>                     | <b>11,032</b> | <b>7,584</b> | <b>3,419</b>      | <b>1,258</b>        | <b>23,293</b> | <b>100.0%</b> |

Source: SAP Norm Day (September 18, 2020)

Prepared by Personnel Research and Analysis

IC:DA/TEACHER DEMOGRAPHICS/2020-21/ALL 2020-21.xsl: ETHN

**LOS ANGELES UNIFIED SCHOOL DISTRICT**  
**Human Resources**

**TEACHER DEMOGRAPHICS 2020-2021**

**All K-12 Classroom Teachers by Local District and Job**

| Local District        | Job           |              |                   |                     | Totals        | %             |
|-----------------------|---------------|--------------|-------------------|---------------------|---------------|---------------|
|                       | Elementary    | Secondary    | Special Education | Resource Specialist |               |               |
| <b>Central</b>        | 1,876         | 1,281        | 507               | 201                 | 3,865         | 16.6%         |
| <b>East</b>           | 1,771         | 1,383        | 555               | 219                 | 3,928         | 16.9%         |
| <b>Northeast</b>      | 1,574         | 1,250        | 458               | 198                 | 3,480         | 14.9%         |
| <b>Northwest</b>      | 1,768         | 1,154        | 472               | 196                 | 3,590         | 15.4%         |
| <b>South</b>          | 1,989         | 1,181        | 520               | 192                 | 3,882         | 16.7%         |
| <b>West</b>           | 1,798         | 1,055        | 443               | 168                 | 3,464         | 14.9%         |
| <b>Option Schools</b> | 24            | 52           | 24                | 1                   | 101           | 0.4%          |
| <b>*Other</b>         | 232           | 228          | 440               | 83                  | 983           | 4.2%          |
| <b>Grand Total</b>    | <b>11,032</b> | <b>7,584</b> | <b>3,419</b>      | <b>1,258</b>        | <b>23,293</b> | <b>100.0%</b> |

\*Adapted Physical Ed Unit-Itinerant; Carlson Hospital; Chavez LA Campus; Deaf & Hard of Hearing Unit-Itinerant; HR Cert Contract Pool (C,E,NE, NW, Sm W); HR-Cert Tmp Asmt Nyr; HR-Districtwide List; Inclusion Facilitator Unit-Itinerant; Inclusion Program School Administration; PE-Teacher-Itinerant; Psychological Services-School Administ; Sp Ed Service Center-Central-Itinerant; Sp Ed-Infant/Pre School Prog; SpEd Administration Services-School Adm; SpEd Services Central, Oper-School Admin; SpEd-Multiple School Administration; Speech & Language Unit-Itinerant; Visual Services Unit-Itinerant

Source: SAP Norm Day (September 18, 2020)

Prepared by Personnel Research and Analysis

IC:DA/TEACHER DEMOGRAPHICS/2020-21/ALL 2020-21.xsl: LD

**LOS ANGELES UNIFIED SCHOOL DISTRICT**  
**Human Resources**

**TEACHER DEMOGRAPHICS 2020-2021**

**All K-12 Classroom Teachers by LD and Ethnic Origin**

| LD                    | Ethnicity                         |              |                           |            |                 |                  |              |             |            | Totals        |
|-----------------------|-----------------------------------|--------------|---------------------------|------------|-----------------|------------------|--------------|-------------|------------|---------------|
|                       | American Indian or Alaskan Native | Asian        | Black or African American | Filipino   | Hispanic/Latino | Pacific Islander | White        | Two or More | Undeclared |               |
| <b>Central</b>        | 20                                | 459          | 268                       | 149        | 1,996           | 8                | 880          | 75          | 10         | 3,865         |
| <b>East</b>           | 17                                | 305          | 106                       | 97         | 2,853           | 4                | 508          | 35          | 3          | 3,928         |
| <b>Northeast</b>      | 17                                | 234          | 130                       | 96         | 1,537           | 4                | 1,419        | 35          | 8          | 3,480         |
| <b>Northwest</b>      | 27                                | 328          | 133                       | 97         | 1,145           | 3                | 1,807        | 41          | 9          | 3,590         |
| <b>South</b>          | 11                                | 377          | 592                       | 152        | 1,636           | 19               | 1,028        | 58          | 9          | 3,882         |
| <b>West</b>           | 16                                | 357          | 694                       | 91         | 917             | 9                | 1,292        | 51          | 37         | 3,464         |
| <b>Option Schools</b> | 0                                 | 6            | 17                        | 7          | 27              | 1                | 41           | 1           | 1          | 101           |
| <b>*Other</b>         | 5                                 | 81           | 123                       | 25         | 350             | 1                | 383          | 11          | 4          | 983           |
| <b>Totals</b>         | <b>113</b>                        | <b>2,147</b> | <b>2,063</b>              | <b>714</b> | <b>10,461</b>   | <b>49</b>        | <b>7,358</b> | <b>307</b>  | <b>81</b>  | <b>23,293</b> |

| Gender           | Gender                            |              |                           |            |                 |                  |              |             |            | Totals        |
|------------------|-----------------------------------|--------------|---------------------------|------------|-----------------|------------------|--------------|-------------|------------|---------------|
|                  | American Indian or Alaskan Native | Asian        | Black or African American | Filipino   | Hispanic/Latino | Pacific Islander | White        | Two or More | Undeclared |               |
| <b>Female</b>    | 78                                | 1,660        | 1,534                     | 517        | 7,634           | 33               | 5,134        | 228         | 67         | 16,885        |
| <b>Male</b>      | 35                                | 487          | 529                       | 197        | 2,826           | 16               | 2,222        | 79          | 14         | 6,405         |
| <b>Nonbinary</b> | 0                                 | 0            | 0                         | 0          | 1               | 0                | 2            | 0           | 0          | 3             |
| <b>Totals</b>    | <b>113</b>                        | <b>2,147</b> | <b>2,063</b>              | <b>714</b> | <b>10,461</b>   | <b>49</b>        | <b>7,358</b> | <b>307</b>  | <b>81</b>  | <b>23,293</b> |

\*Adapted Physical Ed Unit-Itinerant; Carlson Hospital; Chavez LA Campus; Deaf & Hard of Hearing Unit-Itinerant; HR Cert Contract Pool (C,E,NE, NW, Sm W); HR-Cert Tmp Asmt Nyr; HR-Districtwide List; Inclusion Facilitator Unit-Itinerant; Inclusion Program School Administration; PE-Teacher-Itinerant; Psychological Services-School Administ; Sp Ed Service Center-Central-Itinerant; Sp Ed-Infant/Pre School Prog; SpEd Administration Services-School Adm; SpEd Services Central, Oper-School Admin; SpEd-Multiple School Administration; Speech & Language Unit-Itinerant; Visual Services Unit-Itinerant



**LOS ANGELES UNIFIED SCHOOL DISTRICT**  
**Human Resources**

**TEACHER DEMOGRAPHICS 2020-2021**

**All K-12 Classroom Teachers**

**Total Minority by Local District**

|        | Ethnic Origin                     |      |       |       |                           |       |          |      |                 |       |                  |      |                |       |       |       |             |      |            |      |             |
|--------|-----------------------------------|------|-------|-------|---------------------------|-------|----------|------|-----------------|-------|------------------|------|----------------|-------|-------|-------|-------------|------|------------|------|-------------|
| LD     | American Indian or Alaskan Native |      |       |       | Black or African American |       | Filipino |      | Hispanic/Latino |       | Pacific Islander |      | Total Minority |       | White |       | Two or More |      | Undeclared |      | Grand Total |
| C      | 20                                | 0.5% | 459   | 11.9% | 268                       | 6.9%  | 149      | 3.9% | 1,996           | 51.6% | 8                | 0.2% | 2,900          | 75.0% | 880   | 22.8% | 75          | 1.9% | 10         | 0.3% | 3,865       |
| E      | 17                                | 0.4% | 305   | 7.8%  | 106                       | 2.7%  | 97       | 2.5% | 2,853           | 72.6% | 4                | 0.1% | 3,382          | 86.1% | 508   | 12.9% | 35          | 0.9% | 3          | 0.1% | 3,928       |
| NE     | 17                                | 0.5% | 234   | 6.7%  | 130                       | 3.7%  | 96       | 2.8% | 1,537           | 44.2% | 4                | 0.1% | 2,018          | 58.0% | 1,419 | 40.8% | 35          | 1.0% | 8          | 0.2% | 3,480       |
| NW     | 27                                | 0.8% | 328   | 9.1%  | 133                       | 3.7%  | 97       | 2.7% | 1,145           | 31.9% | 3                | 0.1% | 1,733          | 48.3% | 1,807 | 50.3% | 41          | 1.1% | 9          | 0.3% | 3,590       |
| S      | 11                                | 0.3% | 377   | 9.7%  | 592                       | 15.2% | 152      | 3.9% | 1,636           | 42.1% | 19               | 0.5% | 2,787          | 71.8% | 1,028 | 26.5% | 58          | 1.5% | 9          | 0.2% | 3,882       |
| W      | 16                                | 0.5% | 357   | 10.3% | 694                       | 20.0% | 91       | 2.6% | 917             | 26.5% | 9                | 0.3% | 2,084          | 60.2% | 1,292 | 37.3% | 51          | 1.5% | 37         | 1.1% | 3,464       |
| XS     | 0                                 | 0.0% | 6     | 5.9%  | 17                        | 16.8% | 7        | 6.9% | 27              | 26.7% | 1                | 1.0% | 58             | 57.4% | 41    | 40.6% | 1           | 1.0% | 1          | 1.0% | 101         |
| Other* | 5                                 | 0.5% | 81    | 8.2%  | 123                       | 12.5% | 25       | 2.5% | 350             | 35.6% | 1                | 0.1% | 585            | 59.5% | 383   | 39.0% | 11          | 1.1% | 4          | 0.4% | 983         |
| Totals | 113                               | 0.5% | 2,147 | 9.2%  | 2,063                     | 8.9%  | 714      | 3.1% | 10,461          | 44.9% | 49               | 0.2% | 15,547         | 66.7% | 7,358 | 31.6% | 307         | 1.3% | 81         | 0.3% | 23,293      |

\*Adapted Physical Ed Unit-Itinerant; Carlson Hospital; Chavez LA Campus; Deaf & Hard of Hearing Unit-Itinerant; HR Cert Contract Pool (C,E,NE, NW, Sm W); HR-Cert Tmp Asmt Nyr; HR-Districtwide List; Inclusion Facilitator Unit-Itinerant; Inclusion Pro School Administration; PE-Teacher-Itinerant; Psychological Services-School Administ; Sp Ed Service Center-Central-Itinerant; Sp Ed-Infant/Pre School Prog; SpEd Administration Services-School Adm; SpEd Services Central, Oper-School Admin; SpEd-Mt School Administration; Speech & Language Unit-Itinerant; Visual Services Unit-Itinerant

Source: SAP Norm Day (September 18, 2020)

Prepared by Personnel Research and Analysis

IC:DA/TEACHER DEMOGRAPHICS/2020-21/ALL 2020-21.xsl: Total Minority

**LOS ANGELES UNIFIED SCHOOL DISTRICT**  
**Human Resources**

**TEACHER DEMOGRAPHICS 2020-2021**

**All K-12 Classroom Teachers by Local District and Employee Subgroup**

|        | Employee Subgroup |              |            |         |                     |                     |                       |                       |           |                 |                 |        |
|--------|-------------------|--------------|------------|---------|---------------------|---------------------|-----------------------|-----------------------|-----------|-----------------|-----------------|--------|
| LD     | Permanent         | Probationary | Qualifying | Limited | District Intern (T) | District Intern (L) | University Intern (T) | University Intern (L) | Temporary | Provisional (T) | Provisional (L) | Totals |
| C      | 3,267             | 402          | 19         | 3       | 3                   | 92                  | 0                     | 46                    | 4         | 3               | 26              | 3,865  |
| E      | 3,466             | 311          | 7          | 0       | 8                   | 83                  | 1                     | 39                    | 0         | 0               | 13              | 3,928  |
| NE     | 2,993             | 355          | 5          | 3       | 7                   | 75                  | 0                     | 27                    | 3         | 2               | 10              | 3,480  |
| NW     | 3,151             | 335          | 3          | 3       | 6                   | 55                  | 2                     | 25                    | 0         | 0               | 10              | 3,590  |
| S      | 3,305             | 403          | 8          | 2       | 6                   | 78                  | 1                     | 54                    | 3         | 1               | 21              | 3,882  |
| W      | 2,909             | 411          | 10         | 4       | 11                  | 78                  | 0                     | 26                    | 3         | 0               | 12              | 3,464  |
| XS     | 98                | 2            | 1          | 0       | 0                   | 0                   | 0                     | 0                     | 0         | 0               | 0               | 101    |
| Other  | 926               | 43           | 1          | 1       | 0                   | 4                   | 1                     | 5                     | 0         | 1               | 1               | 983    |
| Totals | 20,115            | 2,262        | 54         | 16      | 41                  | 465                 | 5                     | 222                   | 13        | 7               | 93              | 23,293 |

\*Adapted Physical Ed Unit-Itinerant; Carlson Hospital; Chavez LA Campus; Deaf & Hard of Hearing Unit-Itinerant; HR Cert Contract Pool (C,E,NE, NW, Sm W); HR-Cert Tmp Asmt Nyr; HR-Districtwide List; Inclusion Facilitator Unit-Itinerant; Inclusion Program School Administration; PE-Teacher-Itinerant; Psychological Services-School Administ; Sp Ed Service Center-Central-Itinerant; Sp Ed-Infant/Pre School Prog; SpEd Administration Services-School Adm; SpEd Services Central, Oper-School Admin; SpEd-Multiple School Administration; Speech & Language Unit-Itinerant; Visual Services Unit-ItinerantPreschool Program, and Adapted Physical Ed.

**LOS ANGELES UNIFIED SCHOOL DISTRICT**  
**Human Resources**

**TEACHER DEMOGRAPHICS 2020-2021**

**K-12 Classroom Teachers by Job and Years of Experience**

| Job               | Years of Experience by Pay Scale Level |            |            |            |            |            |            |            |            |               | Total         |
|-------------------|--|------------|------------|------------|------------|------------|------------|------------|------------|---------------|---------------|
|                   | 1                                      | 2          | 3          | 4          | 5          | 6          | 7          | 8          | 9          | 10+           |               |
| <b>Elementary</b> | 349                                    | 230        | 246        | 238        | 263        | 146        | 259        | 174        | 95         | 9,032         | <b>11,032</b> |
| <b>Secondary</b>  | 474                                    | 349        | 269        | 278        | 210        | 155        | 236        | 171        | 111        | 5,331         | <b>7,584</b>  |
| <b>Special Ed</b> | 210                                    | 237        | 239        | 263        | 243        | 285        | 215        | 171        | 103        | 2,711         | <b>4,677</b>  |
| <b>Total</b>      | <b>1,033</b>                           | <b>816</b> | <b>754</b> | <b>779</b> | <b>716</b> | <b>586</b> | <b>710</b> | <b>516</b> | <b>309</b> | <b>17,074</b> | <b>23,293</b> |
|                   | (4.4%)                                 | (3.5%)     | (3.2%)     | (3.3%)     | (3.1%)     | (2.5%)     | (3.0%)     | (2.2%)     | (1.3%)     | (73.3%)       | (100%)        |

Note: Years of Experience are reported up to 10+; Teachers may be in any PSG (20-26) with more than 10 years of experience.  
Teachers must be on PSG 27 to move to PSL 11-14 and to Career Increments.

Source: SAP Norm Day (September 18, 2020)

Prepared by Personnel Research and Analysis

IC:DA/TEACHER DEMOGRAPHICS/2020-21/ALL 2020-21.xsl: YE 10+

**LOS ANGELES UNIFIED SCHOOL DISTRICT**  
**Human Resources**

**TEACHER DEMOGRAPHICS 2020-2021**

**All K-12 Classroom Teachers by Age and Local District**

|                | Teacher Age   |             |            |
|----------------|---------------|-------------|------------|
| Local District | Count         | Average Age | Median Age |
| Central        | 3,865         | 45          | 46         |
| East           | 3,928         | 46          | 46         |
| Northeast      | 3,480         | 46          | 47         |
| Northwest      | 3,590         | 47          | 47         |
| South          | 3,882         | 46          | 46         |
| West           | 3,464         | 46          | 46         |
| Option Schools | 101           | 53          | 54         |
| *Other         | 983           | 49          | 49         |
| <b>Total</b>   | <b>23,293</b> | <b>46</b>   | <b>47</b>  |

\*Adapted Physical Ed Unit-Itinerant; Carlson Hospital; Chavez LA Campus; Deaf & Hard of Hearing Unit-Itinerant; HR Cert Contract Pool (C,E,NE, NW, Sm W); HR-Cert Tmp Asmt Nyr; HR-Districtwide List; Inclusion Facilitator Unit-Itinerant; Inclusion Program School Administration; PE-Teacher-Itinerant; Psychological Services-School Administ; Sp Ed Service Center-Central-Itinerant; Sp Ed-Infant/Pre School Prog; SpEd Administration Services-School Adm; SpEd Services Central, Oper-School Admin; SpEd-Multiple School Administration; Speech & Language Unit-Itinerant; Visual Services Unit-Itinerant

**LOS ANGELES UNIFIED SCHOOL DISTRICT**  
**Human Resources**

**TEACHER DEMOGRAPHICS 2020-2021**

**K-12 Classroom Teachers by Age and Job**

| <b>Age</b>        | <b>Job</b>        |                  |                          |                            | <b>Total</b>  | <b>Percent</b> |
|-------------------|-------------------|------------------|--------------------------|----------------------------|---------------|----------------|
|                   | <b>Elementary</b> | <b>Secondary</b> | <b>Special Education</b> | <b>Resource Specialist</b> |               |                |
| <b>25 or Less</b> | 206               | 231              | 55                       | 34                         | <b>526</b>    | 2%             |
| <b>26-30</b>      | 648               | 737              | 315                      | 73                         | <b>1,773</b>  | 8%             |
| <b>31-35</b>      | 639               | 729              | 456                      | 122                        | <b>1,946</b>  | 8%             |
| <b>36-40</b>      | 959               | 924              | 517                      | 135                        | <b>2,535</b>  | 11%            |
| <b>41-45</b>      | 1,914             | 1,191            | 537                      | 210                        | <b>3,852</b>  | 17%            |
| <b>46-50</b>      | 2,526             | 1,250            | 528                      | 224                        | <b>4,528</b>  | 19%            |
| <b>51-55</b>      | 2,021             | 1,059            | 412                      | 164                        | <b>3,656</b>  | 16%            |
| <b>56-60</b>      | 1,321             | 802              | 315                      | 137                        | <b>2,575</b>  | 11%            |
| <b>61-65</b>      | 565               | 434              | 187                      | 97                         | <b>1,283</b>  | 6%             |
| <b>66-70</b>      | 165               | 160              | 73                       | 38                         | <b>436</b>    | 2%             |
| <b>Over 70</b>    | 68                | 67               | 24                       | 24                         | <b>183</b>    | 1%             |
| <b>Total</b>      | <b>11,032</b>     | <b>7,584</b>     | <b>3,419</b>             | <b>1,258</b>               | <b>23,293</b> | <b>100%</b>    |

Source: SAP Norm Day (September 18, 2020)

Prepared by Personnel Research and Analysis

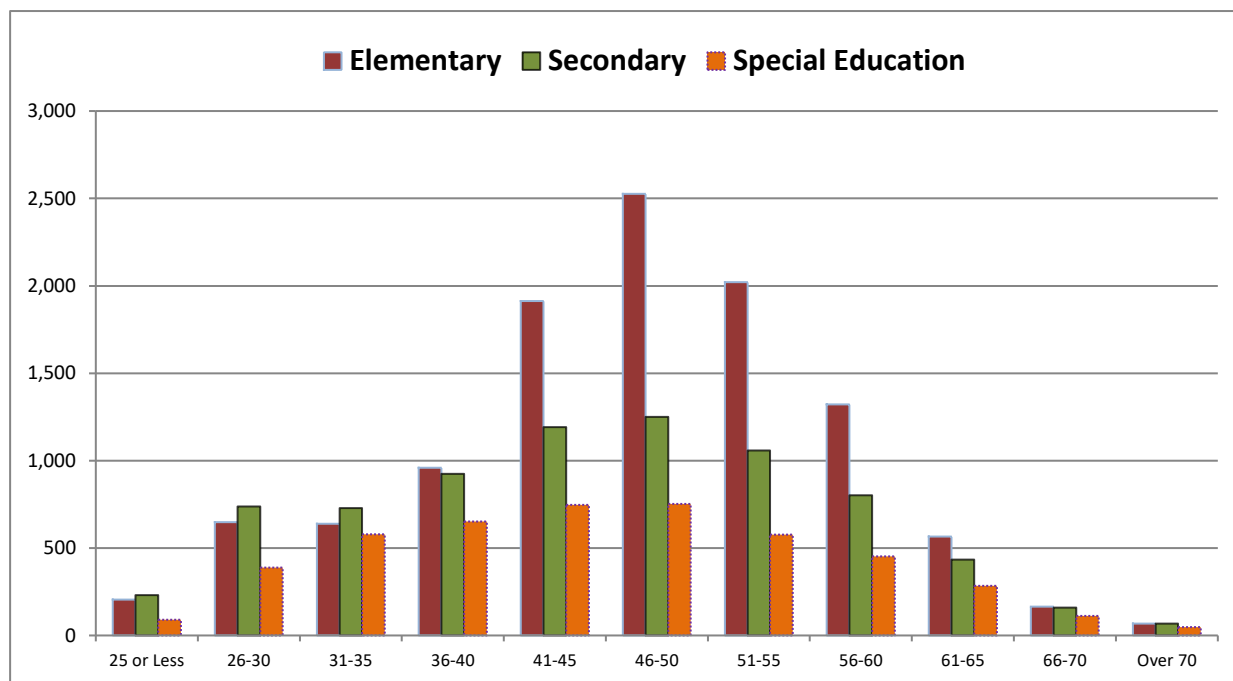
IC:DA/TEACHER DEMOGRAPHICS/2020-21/ALL 2020-21.xsl: Age\_Level

**LOS ANGELES UNIFIED SCHOOL DISTRICT**  
**Human Resources**

**TEACHER DEMOGRAPHICS 2020-2021**

**K-12 Classroom Teachers by Age**

| Age               | School Level  |              |                   | TOTAL         | PERCENT     |
|-------------------|---------------|--------------|-------------------|---------------|-------------|
|                   | Elementary    | Secondary    | Special Education |               |             |
| <b>25 or Less</b> | 206           | 231          | 89                | 526           | 2%          |
| <b>26-30</b>      | 648           | 737          | 388               | 1,773         | 8%          |
| <b>31-35</b>      | 639           | 729          | 578               | 1,946         | 8%          |
| <b>36-40</b>      | 959           | 924          | 652               | 2,535         | 11%         |
| <b>41-45</b>      | 1,914         | 1,191        | 747               | 3,852         | 17%         |
| <b>46-50</b>      | 2,526         | 1,250        | 752               | 4,528         | 19%         |
| <b>51-55</b>      | 2,021         | 1,059        | 576               | 3,656         | 16%         |
| <b>56-60</b>      | 1,321         | 802          | 452               | 2,575         | 11%         |
| <b>61-65</b>      | 565           | 434          | 284               | 1,283         | 6%          |
| <b>66-70</b>      | 165           | 160          | 111               | 436           | 2%          |
| <b>Over 70</b>    | 68            | 67           | 48                | 183           | 1%          |
| <b>TOTAL</b>      | <b>11,032</b> | <b>7,584</b> | <b>4,677</b>      | <b>23,293</b> | <b>100%</b> |
|                   | (48%)         | (32%)        | (20%)             |               |             |



Source: SAP Norm Day (September 18, 2020)

Prepared by Personnel Research and Analysis

IC:DA/TEACHER DEMOGRAPHICS/2020-21/ALL 2020-21.xsl: Age

**LOS ANGELES UNIFIED SCHOOL DISTRICT**  
**Human Resources**

**TEACHER DEMOGRAPHICS 2020-2021**

**All K-12 Classroom Teachers by Pay Scale Group and Job**

|                            | <b>Job</b>        |                  |                          |                            |               |             |
|----------------------------|-------------------|------------------|--------------------------|----------------------------|---------------|-------------|
| <b>Pay Scale Group</b>     | <b>Elementary</b> | <b>Secondary</b> | <b>Special Education</b> | <b>Resource Specialist</b> | <b>Total</b>  | <b>%</b>    |
| <b>20</b><br>(Minimum)     | 365               | 471              | 339                      | 94                         | 1,269         | 5.4%        |
| <b>21</b><br>(+ 14 Points) | 175               | 117              | 125                      | 32                         | 449           | 1.9%        |
| <b>22</b><br>(+ 28 Points) | 516               | 459              | 193                      | 52                         | 1,220         | 5.2%        |
| <b>23</b><br>(+ 42 Points) | 772               | 689              | 252                      | 63                         | 1,776         | 7.6%        |
| <b>24</b><br>(+56 Points)  | 781               | 686              | 349                      | 104                        | 1,920         | 8.2%        |
| <b>25</b><br>(+ 70 Points) | 736               | 619              | 341                      | 92                         | 1,788         | 7.7%        |
| <b>26</b><br>(+ 84 Points) | 761               | 571              | 326                      | 130                        | 1,788         | 7.7%        |
| <b>27</b><br>(+ 98 Points) | 1,169             | 1,197            | 625                      | 223                        | 3,214         | 13.8%       |
| <b>C1</b>                  | 1,468             | 1,075            | 370                      | 208                        | 3,121         | 13.4%       |
| <b>C2</b>                  | 2,711             | 1,101            | 338                      | 187                        | 4,337         | 18.6%       |
| <b>C3</b>                  | 1,222             | 445              | 99                       | 51                         | 1,817         | 7.8%        |
| <b>C4</b>                  | 356               | 154              | 62                       | 22                         | 594           | 2.6%        |
| <b>Total</b>               | <b>11,032</b>     | <b>7,584</b>     | <b>3,419</b>             | <b>1,258</b>               | <b>23,293</b> | <b>100%</b> |

**NORM DAY, SEPTEMBER 2020**  
**TEACHER DEMOGRAPHICS 2020-2021**  
**K-12 Classroom teachers**  
**DISTRIBUTION OF EMPLOYEES ON THE PREPARATION (T) SALARY TABLE\***

|                 | PAY SCALE LEVEL |       |       |       |       |       |       |       |       |        |       |       |       |       | CI     | TOTAL   | Percent |
|-----------------|-----------------|-------|-------|-------|-------|-------|-------|-------|-------|--------|-------|-------|-------|-------|--------|---------|---------|
|                 | 1               | 2     | 3     | 4     | 5     | 6     | 7     | 8     | 9     | 10     | 11    | 12    | 13    | 14    |        |         |         |
| <b>PS GROUP</b> |                 |       |       |       |       |       |       |       |       |        |       |       |       |       |        |         |         |
| <b>20</b>       | 457             | 75    | 45    | 30    | 20    | 11    | 11    | 5     | 5     | 73     |       |       |       |       |        | 732     | 3.25 %  |
| <b>21</b>       | 15              | 35    | 60    | 53    | 23    | 13    | 27    | 8     | 3     | 110    |       |       |       |       |        | 347     | 1.54    |
| <b>22</b>       | 127             | 174   | 116   | 104   | 107   | 61    | 39    | 29    | 12    | 386    |       |       |       |       |        | 1,155   | 5.13    |
| <b>23</b>       | 78              | 151   | 175   | 158   | 140   | 84    | 90    | 58    | 38    | 769    |       |       |       |       |        | 1,741   | 7.73    |
| <b>24</b>       | 30              | 86    | 112   | 151   | 126   | 110   | 115   | 79    | 59    | 1,033  |       |       |       |       |        | 1,901   | 8.44    |
| <b>25</b>       | 11              | 38    | 67    | 95    | 103   | 104   | 115   | 76    | 44    | 1,123  |       |       |       |       |        | 1,776   | 7.89    |
| <b>26</b>       | 7               | 21    | 31    | 73    | 86    | 82    | 106   | 89    | 42    | 1,247  |       |       |       |       |        | 1,784   | 7.92    |
| <b>27</b>       | 10              | 17    | 27    | 47    | 81    | 110   | 197   | 169   | 106   | 384    | 486   | 538   | 547   | 490   |        | 3,209   | 14.25   |
| <b>C1</b>       |                 |       |       |       |       |       |       |       |       |        |       |       |       |       | 3,120  | 3,120   | 13.86   |
| <b>C2</b>       |                 |       |       |       |       |       |       |       |       |        |       |       |       |       | 4,337  | 4,337   | 19.26   |
| <b>C3</b>       |                 |       |       |       |       |       |       |       |       |        |       |       |       |       | 1,817  | 1,817   | 8.07    |
| <b>C4</b>       |                 |       |       |       |       |       |       |       |       |        |       |       |       |       | 594    | 594     | 2.64    |
| <b>TOTAL</b>    | 735             | 597   | 633   | 711   | 686   | 575   | 700   | 513   | 309   | 5,125  | 486   | 538   | 547   | 490   | 9,868  | 22,513  | 100 %   |
| <b>Percent</b>  | 3.26%           | 2.65% | 2.81% | 3.16% | 3.05% | 2.55% | 3.11% | 2.28% | 1.37% | 22.76% | 2.16% | 2.39% | 2.43% | 2.18% | 43.83% | 100.00% |         |

1<sup>st</sup> Career Increment: 3,120 13.86 %  
2<sup>nd</sup> Career Increment: 4,337 19.26  
3<sup>rd</sup> Career Increment: 1,817 8.07  
4<sup>th</sup> Career Increment: 594 2.64  
Master's Degree: 9,660 42.91  
Doctor's Degree: 333 1.48

**TOTAL ANNUAL SALARIES = \$1,787,832,609**  
**With 22.14% mandated benefits = \$2,183,658,749**

**2020-2021 Average Annual Salary = \$79,413**  
**(Excluding Mandated Benefits)**

Average Monthly Rate = \$6,618  
Average Hourly Rate = \$64.87990

\*Excludes X/Z Basis assignments and Day-to-day Extended Substitutes  
Source: SAP Norm Day (September 18, 2020)  
Prepared by Personnel Research and Analysis  
IC:DA/TEACHER DEMOGRAPHICS/2020-21/ALL 2020-21.xsl:2020-21 CT T Table



**NORM DAY, SEPTEMBER 2020  
TEACHER DEMOGRAPHICS 2020-2021**

**K-12 Classroom teachers  
DISTRIBUTION OF EMPLOYEES ON THE PREPARATION (L) SALARY TABLE\***

|                 | PAY SCALE LEVEL |            |            |           |           |           |           |          |          |           |          |          |          |          |          | TOTAL      | Percent      |
|-----------------|-----------------|------------|------------|-----------|-----------|-----------|-----------|----------|----------|-----------|----------|----------|----------|----------|----------|------------|--------------|
|                 | 1               | 2          | 3          | 4         | 5         | 6         | 7         | 8        | 9        | 10        | 11       | 12       | 13       | 14       | CI       |            |              |
| <b>PS GROUP</b> |                 |            |            |           |           |           |           |          |          |           |          |          |          |          |          |            |              |
| 20              | 267             | 148        | 76         | 25        | 6         | 5         | 3         | 2        |          | 5         |          |          |          |          |          | 537        | 68.85 %      |
| 21              | 6               | 34         | 25         | 20        | 10        | 3         | 2         |          |          | 2         |          |          |          |          |          | 102        | 13.08        |
| 22              | 17              | 17         | 9          | 6         | 10        |           | 2         |          |          | 4         |          |          |          |          |          | 65         | 8.33         |
| 23              | 4               | 9          | 5          | 9         | 1         |           | 3         | 1        |          | 3         |          |          |          |          |          | 35         | 4.49         |
| 24              | 1               | 5          | 4          | 5         | 2         |           |           |          |          | 2         |          |          |          |          |          | 19         | 2.44         |
| 25              | 1               | 4          | 2          | 1         |           | 2         |           |          |          | 2         |          |          |          |          |          | 12         | 1.54         |
| 26              |                 |            |            | 2         |           | 1         |           |          |          | 1         |          |          |          |          |          | 4          | 0.51         |
| 27              | 2               | 2          |            |           | 1         |           |           |          |          |           |          |          |          |          |          | 5          | 0.64         |
| C1              |                 |            |            |           |           |           |           |          |          |           |          |          |          |          | 1        | 1          | 0.13         |
| C2              |                 |            |            |           |           |           |           |          |          |           |          |          |          |          |          | 0          | 0.00         |
| C3              |                 |            |            |           |           |           |           |          |          |           |          |          |          |          |          | 0          | 0.00         |
| C4              |                 |            |            |           |           |           |           |          |          |           |          |          |          |          |          | 0          | 0.00         |
| <b>TOTAL</b>    | <b>298</b>      | <b>219</b> | <b>121</b> | <b>68</b> | <b>30</b> | <b>11</b> | <b>10</b> | <b>3</b> | <b>0</b> | <b>19</b> | <b>0</b> | <b>0</b> | <b>0</b> | <b>0</b> | <b>1</b> | <b>780</b> | <b>100 %</b> |

|                                   |    |        |
|-----------------------------------|----|--------|
| 1 <sup>st</sup> Career Increment: | 1  | 0.13 % |
| 2 <sup>nd</sup> Career Increment: | 0  | 0.00   |
| 3 <sup>rd</sup> Career Increment: | 0  | 0.00   |
| 4 <sup>th</sup> Career Increment: | 0  | 0.00   |
| Master's Degree:                  | 67 | 8.59   |
| Doctor's Degree:                  | 8  | 1.03   |

**TOTAL ANNUAL SALARIES = \$37,626,739**  
**With 22.14% mandated benefits = \$45,957,299**

**2020-2021 Average Annual Salary = \$48,239**  
**(Excluding Mandated Benefits)**

Average Monthly Rate = \$4,020  
Average Hourly Rate = \$39.41095

\*Excludes X/Z Basis assignments and Day-to-day Extended Substitutes

Source: SAP Norm Day (September 18, 2020)

Prepared by Personnel Research and Analysis

IC:DA/TEACHER DEMOGRAPHICS/2020-21/ALL 2020-21.xsl:2020-21 CT L Table

**DISTRIBUTION OF EMPLOYEES ON THE PREPARATION (T/L) SALARY TABLE\***  
**TEACHER DEMOGRAPHICS 2020-2021**

K-12 Classroom teachers

**DISTRIBUTION OF EMPLOYEES ON THE PREPARATION (T/L) SALARY TABLE\***

|          | PAY SCALE LEVEL |       |       |       |       |       |       |       |       |        |       |       |       |       |        | TOTAL  | Percent |
|----------|-----------------|-------|-------|-------|-------|-------|-------|-------|-------|--------|-------|-------|-------|-------|--------|--------|---------|
|          | 1               | 2     | 3     | 4     | 5     | 6     | 7     | 8     | 9     | 10     | 11    | 12    | 13    | 14    | CI     |        |         |
| PS GROUP |                 |       |       |       |       |       |       |       |       |        |       |       |       |       |        |        |         |
| 20       | 724             | 223   | 121   | 55    | 26    | 16    | 14    | 7     | 5     | 78     | 0     | 0     | 0     | 0     | 0      | 1,269  | 5.45 %  |
| 21       | 21              | 69    | 85    | 73    | 33    | 16    | 29    | 8     | 3     | 112    | 0     | 0     | 0     | 0     | 0      | 449    | 1.93    |
| 22       | 144             | 191   | 125   | 110   | 117   | 61    | 41    | 29    | 12    | 390    | 0     | 0     | 0     | 0     | 0      | 1,220  | 5.24    |
| 23       | 82              | 160   | 180   | 167   | 141   | 84    | 93    | 59    | 38    | 772    | 0     | 0     | 0     | 0     | 0      | 1,776  | 7.62    |
| 24       | 31              | 91    | 116   | 156   | 128   | 110   | 115   | 79    | 59    | 1,035  | 0     | 0     | 0     | 0     | 0      | 1,920  | 8.24    |
| 25       | 12              | 42    | 69    | 96    | 103   | 106   | 115   | 76    | 44    | 1,125  | 0     | 0     | 0     | 0     | 0      | 1,788  | 7.68    |
| 26       | 7               | 21    | 31    | 75    | 86    | 83    | 106   | 89    | 42    | 1,248  | 0     | 0     | 0     | 0     | 0      | 1,788  | 7.68    |
| 27       | 12              | 19    | 27    | 47    | 82    | 110   | 197   | 169   | 106   | 384    | 486   | 538   | 547   | 490   | 0      | 3,214  | 13.80   |
| C1       | 0               | 0     | 0     | 0     | 0     | 0     | 0     | 0     | 0     | 0      | 0     | 0     | 0     | 0     | 3,121  | 3,121  | 13.40   |
| C2       | 0               | 0     | 0     | 0     | 0     | 0     | 0     | 0     | 0     | 0      | 0     | 0     | 0     | 0     | 4,337  | 4,337  | 18.62   |
| C3       | 0               | 0     | 0     | 0     | 0     | 0     | 0     | 0     | 0     | 0      | 0     | 0     | 0     | 0     | 1,817  | 1,817  | 7.80    |
| C4       | 0               | 0     | 0     | 0     | 0     | 0     | 0     | 0     | 0     | 0      | 0     | 0     | 0     | 0     | 594    | 594    | 2.55    |
| TOTAL:   | 1,033           | 816   | 754   | 779   | 716   | 586   | 710   | 516   | 309   | 5,144  | 486   | 538   | 547   | 490   | 9,869  | 23,293 | 100 %   |
| Percent: | 4.43%           | 3.50% | 3.24% | 3.34% | 3.07% | 2.52% | 3.05% | 2.22% | 1.33% | 22.08% | 2.09% | 2.31% | 2.35% | 2.10% | 42.37% | 100%   |         |

|                                   |       |         |
|-----------------------------------|-------|---------|
| 1 <sup>st</sup> Career Increment: | 3,121 | 13.40 % |
| 2 <sup>nd</sup> Career Increment: | 4,337 | 18.62   |
| 3 <sup>rd</sup> Career Increment: | 1,817 | 7.80    |
| 4 <sup>th</sup> Career Increment: | 594   | 2.55    |
| Master's Degree:                  | 9,727 | 41.76   |
| Doctor's Degree:                  | 341   | 1.46    |

**TOTAL ANNUAL SALARIES =** \$1,825,459,348  
**With 22.14% mandated benefits =** \$2,229,616,048

**2020-2021 Average Annual Salary =** **\$78,369**  
**(Excluding Mandated Benefits)**

Average Pay Period Rate = \$6,531  
Average Hourly Rate = \$64.02696

\*Excludes X/Z Basis assignments and Day-to-day Extended Substitutes

Source: SAP Norm Day (September 18, 2020)

Prepared by Personnel Research and Analysis

IC:DA/TEACHER DEMOGRAPHICS/2020-21/ALL 2020-21.xsl:2020-21 CT TL Table

**LOS ANGELES UNIFIED SCHOOL DISTRICT**  
**Human Resources**

**SCHOOL-BASED ADMINISTRATOR DEMOGRAPHICS 2020-2021**

**All School-Based Administrators by Employee Subgroup and Job**

|                          | <b>Job</b>       |                            |               |               |
|--------------------------|------------------|----------------------------|---------------|---------------|
| <b>Employee Subgroup</b> | <b>Principal</b> | <b>Assistant Principal</b> | <b>Totals</b> | <b>%</b>      |
| <b>Permanent</b>         | 654              | 704                        | 1,358         | 74.6%         |
| <b>Qualifying</b>        | 145              | 184                        | 329           | 18.1%         |
| <b>Limited</b>           | 16               | 1                          | 17            | 0.9%          |
| <b>Temporary</b>         | 2                | 1                          | 3             | 0.2%          |
| <b>Provisional</b>       | 61               | 46                         | 107           | 5.9%          |
| <b>Restricted</b>        | 4                | 2                          | 6             | 0.3%          |
| <b>Totals</b>            | <b>882</b>       | <b>938</b>                 | <b>1,820</b>  | <b>100.0%</b> |

Source: SAP Norm Day (September 18, 2020)

Prepared by Personnel Research and Analysis

IC:DA/TEACHER DEMOGRAPHICS/2020-21/ALL 2020-21.xsl: ESG SBA

**LOS ANGELES UNIFIED SCHOOL DISTRICT**  
**Human Resources**

**SCHOOL-BASED ADMINISTRATOR DEMOGRAPHICS 2020-2021**

**School-Based Administrators by Ethnic Origin, Gender, and Job**

|  | <b>Job</b>       |                            |               |               |
|--|------------------|----------------------------|---------------|---------------|
| <b>Ethnic Origin</b>                     | <b>Principal</b> | <b>Assistant Principal</b> | <b>Totals</b> | <b>%</b>      |
| <b>American Indian or Alaskan Native</b> | 0                | 4                          | 4             | 0.2%          |
| <b>Asian</b>                             | 65               | 64                         | 129           | 7.1%          |
| <b>Black or African American</b>         | 197              | 194                        | 391           | 21.5%         |
| <b>Filipino</b>                          | 11               | 24                         | 35            | 1.9%          |
| <b>Hispanic/Latino</b>                   | 393              | 448                        | 841           | 46.2%         |
| <b>Pacific Islander</b>                  | 1                | 2                          | 3             | 0.2%          |
| <b>White</b>                             | 215              | 198                        | 413           | 22.7%         |
| <b>Two or More</b>                       | 0                | 4                          | 4             | 0.2%          |
| <b>Totals</b>                            | <b>882</b>       | <b>938</b>                 | <b>1,820</b>  | <b>100.0%</b> |

|               | <b>Job</b>       |                            |               |               |
|---------------|------------------|----------------------------|---------------|---------------|
| <b>Gender</b> | <b>Principal</b> | <b>Assistant Principal</b> | <b>Totals</b> | <b>%</b>      |
| <b>Female</b> | 590              | 612                        | 1,202         | 66.0%         |
| <b>Male</b>   | 292              | 326                        | 618           | 34.0%         |
| <b>Totals</b> | <b>882</b>       | <b>938</b>                 | <b>1,820</b>  | <b>100.0%</b> |

Source: SAP Norm Day (September 18, 2020)

Prepared by Personnel Research and Analysis

IC:DA/TEACHER DEMOGRAPHICS/2020-21/ALL 2020-21.xsl: Ethnicity & Gender

**LOS ANGELES UNIFIED SCHOOL DISTRICT**  
**Human Resources**

**SCHOOL-BASED ADMINISTRATOR DEMOGRAPHICS 2020-2021**  
**School-Based Administrators by Local District and Job**

| Local District | Job        |                     | Totals       | %             |
|----------------|------------|---------------------|--------------|---------------|
|                | Principal  | Assistant Principal |              |               |
| <b>C</b>       | 158        | 142                 | 300          | 16.5%         |
| <b>E</b>       | 147        | 127                 | 274          | 15.1%         |
| <b>NE</b>      | 120        | 99                  | 219          | 12.0%         |
| <b>NW</b>      | 123        | 91                  | 214          | 11.8%         |
| <b>S</b>       | 148        | 127                 | 275          | 15.1%         |
| <b>W</b>       | 159        | 94                  | 253          | 13.9%         |
| <b>XS</b>      | 3          | 4                   | 7            | 0.4%          |
| <b>Adult</b>   | 10         | 39                  | 49           | 2.7%          |
| <b>Other</b>   | 14         | 215                 | 229          | 12.6%         |
| <b>Totals</b>  | <b>882</b> | <b>938</b>          | <b>1,820</b> | <b>100.0%</b> |

\* HR-Pool-Admin Asmts, Sp Ed-Multiple, and Reassigned Administrators.

Source: SAP Norm Day (September 18, 2020)

Prepared by Personnel Research and Analysis

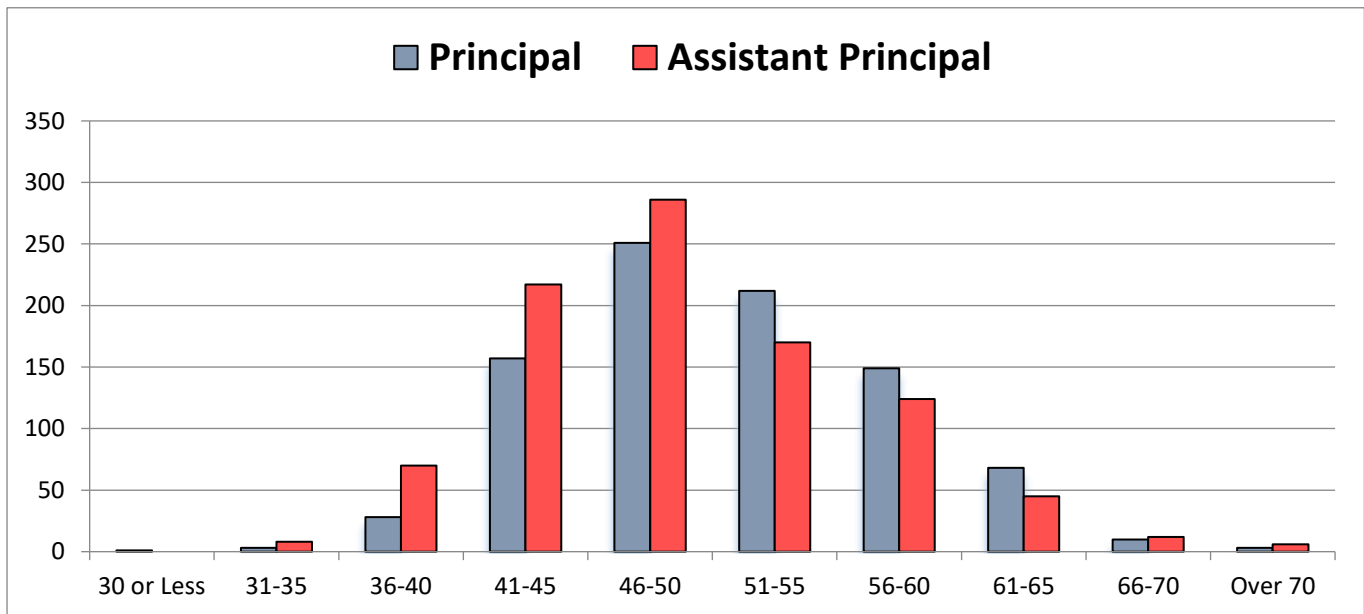
IC:DA/TEACHER DEMOGRAPHICS/2020-21/ALL 2020-21.xsl: LD SBA

**LOS ANGELES UNIFIED SCHOOL DISTRICT**  
**Human Resources**

**SCHOOL-BASED ADMINISTRATOR DEMOGRAPHICS 2020-2021**

**School-Based Administrators by Age and Position**

| Age               | Position   |                     | Total        | %             |
|-------------------|------------|---------------------|--------------|---------------|
|                   | Principal  | Assistant Principal |              |               |
| <b>30 or Less</b> | 1          | 0                   | 1            | 0.1%          |
| <b>31-35</b>      | 3          | 8                   | 11           | 0.6%          |
| <b>36-40</b>      | 28         | 70                  | 98           | 5.4%          |
| <b>41-45</b>      | 157        | 217                 | 374          | 20.5%         |
| <b>46-50</b>      | 251        | 286                 | 537          | 29.5%         |
| <b>51-55</b>      | 212        | 170                 | 382          | 21.0%         |
| <b>56-60</b>      | 149        | 124                 | 273          | 15.0%         |
| <b>61-65</b>      | 68         | 45                  | 113          | 6.2%          |
| <b>66-70</b>      | 10         | 12                  | 22           | 1.2%          |
| <b>Over 70</b>    | 3          | 6                   | 9            | 0.5%          |
| <b>Total</b>      | <b>882</b> | <b>938</b>          | <b>1,820</b> | <b>100.0%</b> |



Source: SAP Norm Day (September 18, 2020)

Prepared by Personnel Research and Analysis

IC:DA/TEACHER DEMOGRAPHICS/2020-21/ALL 2020-21.xsl: Age Summary

**LOS ANGELES UNIFIED SCHOOL DISTRICT**  
**Human Resources**

**NON-SCHOOL-BASED ADMINISTRATOR DEMOGRAPHICS 2020-2021**

| Employee Subgroup | Employee Subgroup and Job  |   |              |             |                                |                                  |                       | Totals     | %             |
|-------------------|--|---|--------------|-------------|--------------------------------|----------------------------------|-----------------------|------------|---------------|
|                   | Superintendent,<br>Assistant<br>Superintendent,<br>Instructional Area<br>Superintendents | Executive Directors,<br>Chiefs, Assistant<br>General Counsel<br>Attorneys | Coordinators | Specialists | Directors and<br>Administators | School Support<br>Administrators | Temporary<br>Advisers |            |               |
| Permanent         | 0  | 1   | 15           | 13          | 5                              | 0                                | 0                     | 34         | 4.2%          |
| Limited           | 5  | 20  | 0            | 0           | 0                              | 703                              | 16                    | 744        | 92.3%         |
| Temporary         | 2  | 2   | 0            | 0           | 0                              | 14                               | 3                     | 21         | 2.6%          |
| Provisional       | 0  | 0   | 5            | 1           | 1                              | 0                                | 0                     | 7          | 0.9%          |
| <b>Totals</b>     | <b>7</b>   | <b>23</b>   | <b>20</b>    | <b>14</b>   | <b>6</b>                       | <b>717</b>                       | <b>19</b>             | <b>806</b> | <b>100.0%</b> |

Includes NSB Administrators on the G Table

Source: SAP Norm Day (September 18, 2020)

Prepared by Personnel Research and Analysis

IC:DA/TEACHER DEMOGRAPHICS/2020-21/ALL 2020-21.xsl: NSB ESG

**LOS ANGELES UNIFIED SCHOOL DISTRICT**  
**Human Resources**

**NON-SCHOOL-BASED ADMINISTRATOR DEMOGRAPHICS 2020-2021**

| Ethnic Origin and Job        |   |   |              |             |                                 |                                  |                       |            |               |
|------------------------------|---|---|--------------|-------------|---------------------------------|----------------------------------|-----------------------|------------|---------------|
| Ethnicity                    | Superintendent,<br>Assistant Superintendent,<br>Instructional Area<br>Superintendents | Executive Directors,<br>Chiefs, Assistant<br>General Counsel<br>Attorneys | Coordinators | Specialists | Directors and<br>Administrators | School Support<br>Administrators | Temporary<br>Advisers | Totals     | %             |
| American Indian              | 0   | 0   | 0            | 0           | 0                               | 0                                | 0                     | 0          | 0.0%          |
| Asian                        | 0   | 4   | 1            | 3           | 1                               | 56                               | 1                     | 66         | 8.2%          |
| Black or African<br>American | 1   | 4   | 5            | 0           | 1                               | 112                              | 4                     | 127        | 15.8%         |
| Filipino                     | 1   | 0   | 1            | 0           | 0                               | 16                               | 0                     | 18         | 2.2%          |
| Hispanic/Latino              | 4   | 10  | 11           | 4           | 2                               | 313                              | 8                     | 352        | 43.7%         |
| Pacific Islander             | 0   | 0   | 0            | 0           | 0                               | 2                                | 0                     | 2          | 0.2%          |
| White                        | 1   | 5   | 1            | 7           | 2                               | 216                              | 6                     | 238        | 29.5%         |
| Two or More                  | 0   | 0   | 1            | 0           | 0                               | 2                                | 0                     | 3          | 0.4%          |
| <b>Totals</b>                | <b>7</b>  | <b>23</b>   | <b>20</b>    | <b>14</b>   | <b>6</b>                        | <b>717</b>                       | <b>19</b>             | <b>806</b> | <b>100.0%</b> |

| By Gender and Job |   |   |              |             |                                 |                                  |                       |            |               |
|-------------------|---|---|--------------|-------------|---------------------------------|----------------------------------|-----------------------|------------|---------------|
| Gender            | Superintendent,<br>Assistant Superintendent,<br>Instructional Area<br>Superintendents | Executive Directors,<br>Chiefs, Assistant<br>General Counsel<br>Attorneys | Coordinators | Specialists | Directors and<br>Administrators | School Support<br>Administrators | Temporary<br>Advisers | Totals     | %             |
| Female            | 1   | 12  | 14           | 13          | 3                               | 500                              | 12                    | 555        | 68.9%         |
| Male              | 6   | 11  | 6            | 1           | 3                               | 217                              | 7                     | 251        | 31.1%         |
| <b>Totals</b>     | <b>7</b>  | <b>23</b>   | <b>20</b>    | <b>14</b>   | <b>6</b>                        | <b>717</b>                       | <b>19</b>             | <b>806</b> | <b>100.0%</b> |

Includes NSB Administrators on the G Table

Source: SAP Norm Day (September 18, 2020)

Prepared by Personnel Research and Analysis

IC:DA/TEACHER DEMOGRAPHICS/2020-21/ALL 2020-21.xsl: NSB Ethnicity & Gender



**LOS ANGELES UNIFIED SCHOOL DISTRICT**  
**Human Resources**

**NON-SCHOOL-BASED ADMINISTRATOR DEMOGRAPHICS 2020-2021**

| Age               | Age and Job  |   |              |             |                                 |                                  |                       | Totals     | %             |
|-------------------|--|---|--------------|-------------|---------------------------------|----------------------------------|-----------------------|------------|---------------|
|                   | Superintendent,<br>Assistant<br>Superintendent,<br>Instructional Area<br>Superintendents | Executive Directors,<br>Chiefs, Assistant<br>General Counsel<br>Attorneys | Coordinators | Specialists | Directors and<br>Administrators | School Support<br>Administrators | Temporary<br>Advisers |            |               |
| <b>35 or Less</b> | 0  | 0   | 0            | 0           | 0                               | 9                                | 0                     | 9          | 1.1%          |
| <b>36-40</b>      | 0  | 0   | 0            | 1           | 0                               | 61                               | 1                     | 63         | 7.8%          |
| <b>41-45</b>      | 1  | 2   | 3            | 3           | 0                               | 130                              | 3                     | 142        | 17.6%         |
| <b>46-50</b>      | 2  | 8   | 8            | 7           | 2                               | 204                              | 3                     | 234        | 29.0%         |
| <b>51-55</b>      | 0  | 5   | 5            | 3           | 3                               | 151                              | 7                     | 174        | 21.6%         |
| <b>56-60</b>      | 4  | 4   | 2            | 0           | 1                               | 107                              | 4                     | 122        | 15.1%         |
| <b>61-65</b>      | 0  | 2   | 1            | 0           | 0                               | 43                               | 1                     | 47         | 5.8%          |
| <b>66-70</b>      | 0  | 1   | 1            | 0           | 0                               | 8                                | 0                     | 10         | 1.2%          |
| <b>Over 71</b>    | 0  | 1   | 0            | 0           | 0                               | 4                                | 0                     | 5          | 0.6%          |
| <b>Totals</b>     | <b>7</b>   | <b>23</b>   | <b>20</b>    | <b>14</b>   | <b>6</b>                        | <b>717</b>                       | <b>19</b>             | <b>806</b> | <b>100.0%</b> |

Includes NSB Administrators on the G Table

Source: SAP Norm Day (September 18, 2020)

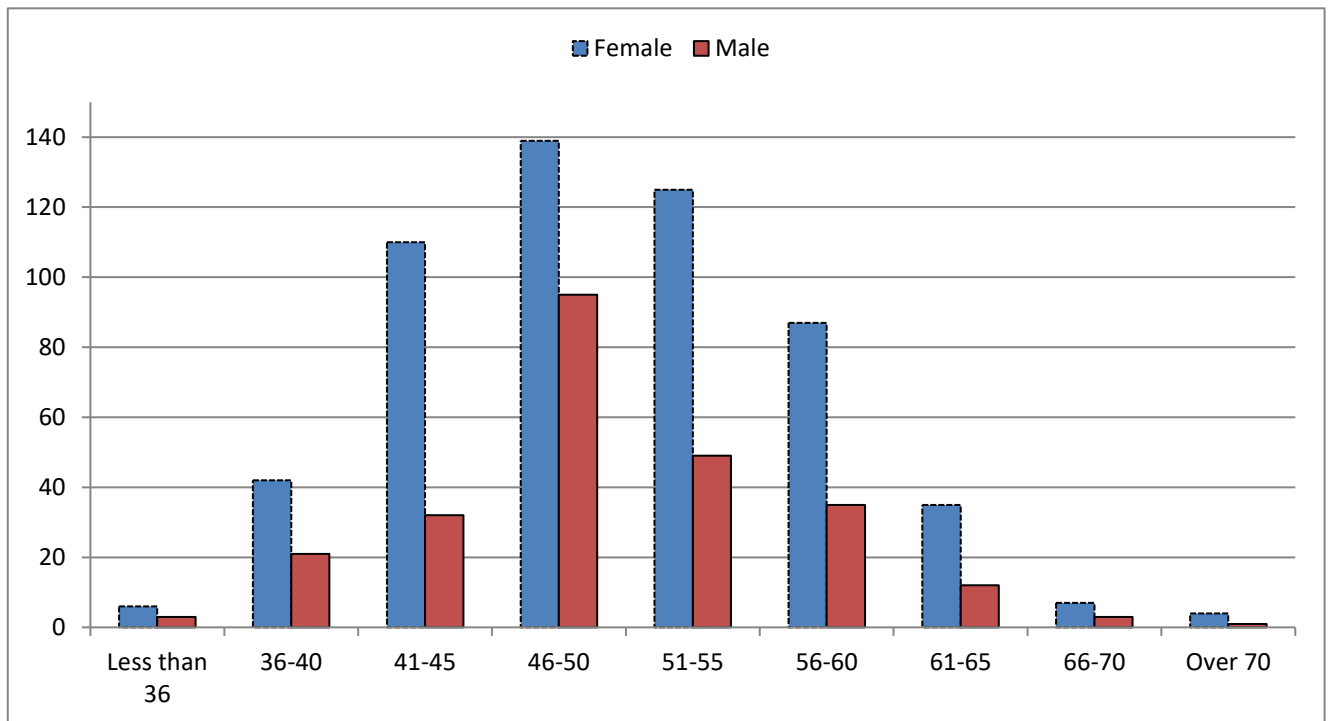
Prepared by Personnel Research and Analysis

IC:DA/TEACHER DEMOGRAPHICS/2020-21/ALL 2020-21.xsl:NSB Age & Job

**LOS ANGELES UNIFIED SCHOOL DISTRICT**  
**Human Resources**

**NON-SCHOOL-BASED ADMINISTRATOR DEMOGRAPHICS 2020-2021**

| <b>Age and Gender</b> |               |             |              |               |
|-----------------------|---------------|-------------|--------------|---------------|
| <b>Age</b>            | <b>Female</b> | <b>Male</b> | <b>Total</b> | <b>%</b>      |
| <b>Less than 36</b>   | 6             | 3           | 9            | 1%            |
| <b>36-40</b>          | 42            | 21          | 63           | 8%            |
| <b>41-45</b>          | 110           | 32          | 142          | 18%           |
| <b>46-50</b>          | 139           | 95          | 234          | 29%           |
| <b>51-55</b>          | 125           | 49          | 174          | 22%           |
| <b>56-60</b>          | 87            | 35          | 122          | 15%           |
| <b>61-65</b>          | 35            | 12          | 47           | 6%            |
| <b>66-70</b>          | 7             | 3           | 10           | 1%            |
| <b>Over 70</b>        | 4             | 1           | 5            | 1%            |
| <b>Total</b>          | <b>555</b>    | <b>251</b>  | <b>806</b>   | <b>100.0%</b> |



Includes NSB Administrators on the G Table

Source: SAP Norm Day (September 18, 2020)

Prepared by Personnel Research and Analysis

IC:DA/TEACHER DEMOGRAPHICS/2020-21/ALL 2020-21.xsl:NSB Age & Gender